

Moon Over Blackbird

Stitch Count: 45 W x 46 H

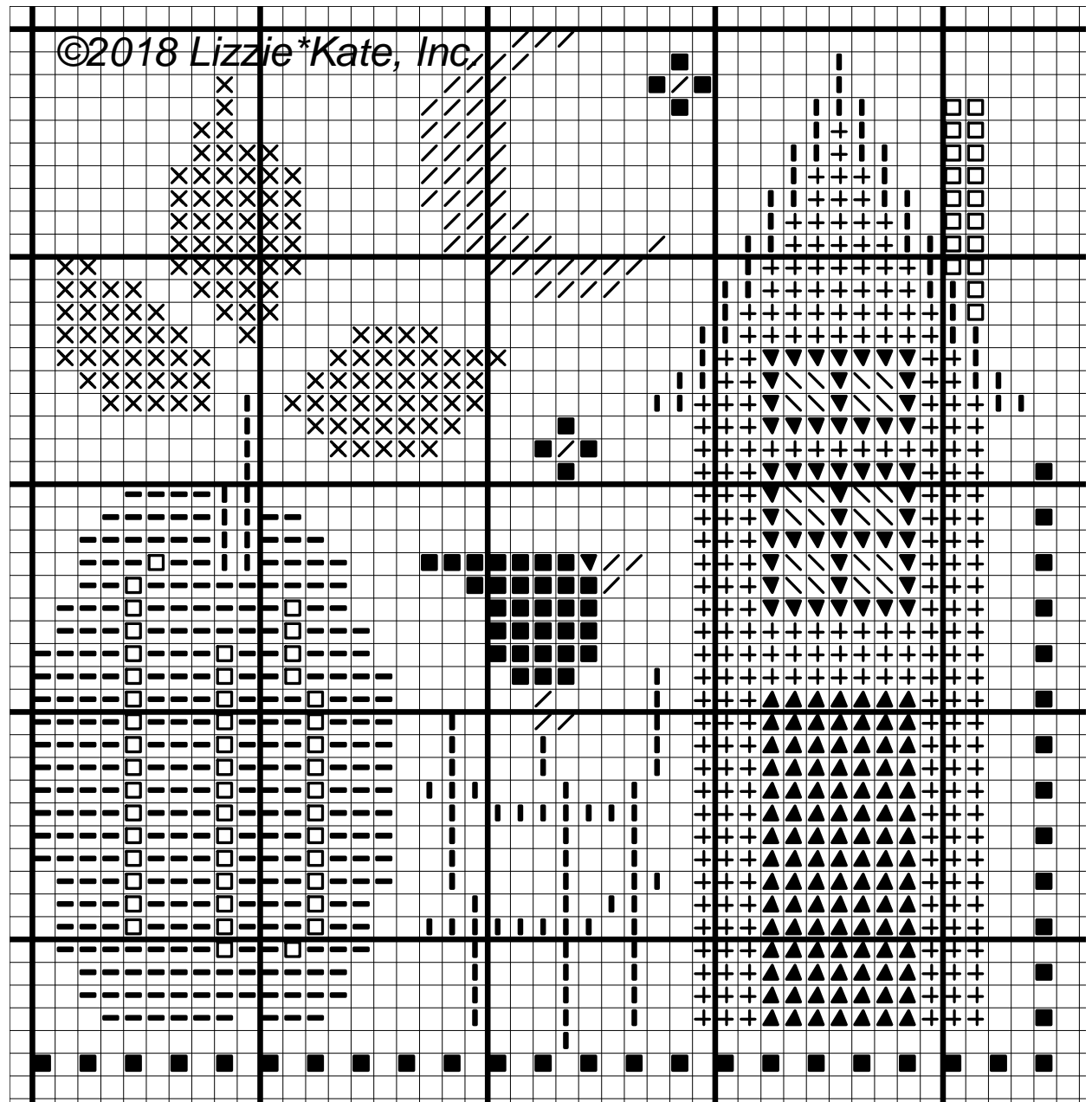
Model stitched on Weeks Dye Works
28 count Tin Roof Gingham. Choose
your favorite fabric.

Symbol	Weeks Dye Works	DMC
X	bullfrog	936
\	cadet	926
	chestnut	898
-	clockwork	720
▲	Kentucky bluegrass	3848
▼	light khaki	3033
■	mascara	310
□	red rocks	3777
+	tigers eye	781
/	whiskey	783

Lizzie★Kate®

Lizzie*Kate, Inc. / www.LizzieKate.com
<http://lizziekateblog.blogspot.com>

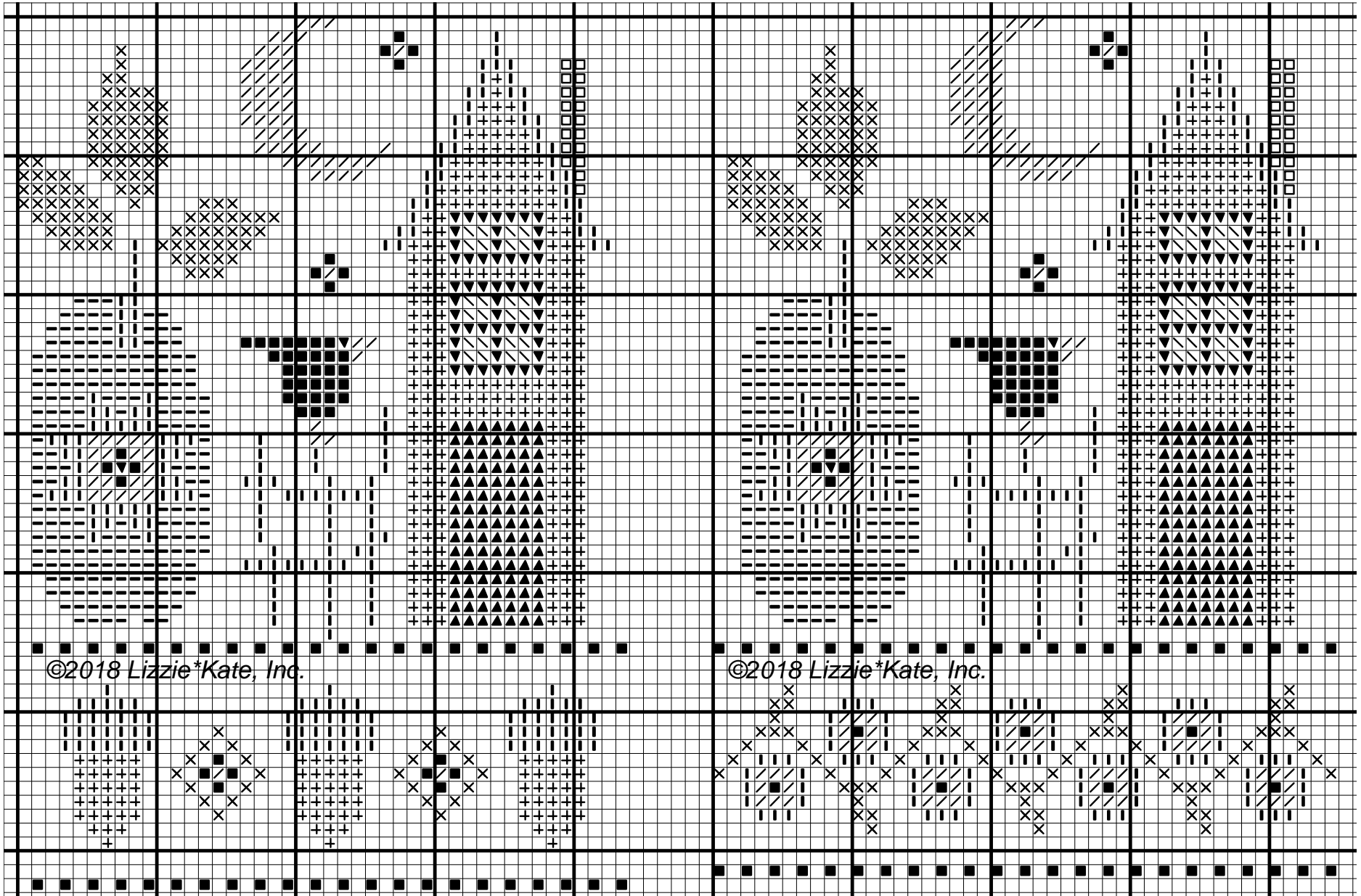
Copyright 2018 Lizzie*Kate, Inc.



Moon Over Blackbird

Stitch Count: 44 W x 63 H

Stitch Count: 45 W x 62 H



Lizzie★Kate®

Lizzie*Kate, Inc. / www.LizzieKate.com

<http://lizziekateblog.blogspot.com>

Copyright 2018 Lizzie*Kate, Inc.